

# TRX 15

49 XT 18.2 M



  
Capacity  
**15 T**

  
Boom Height  
**21 M**  
(With Fly Jib)

  
Clutch  
**Hydraulic**

  
Creep Speed  
**1.3 kmph**

  
Articulation  
**Lowest**

## SPECIFICATIONS



### RATED CAPACITY

15 Tonnes at	1.50 m radius
900 kg at	15.80 m radius
Max Height	18.20 m



### VEHICLE PERFORMANCE

Speed	Max 33 kmph
Gradeability	40% unladen
Creep Speed	1.3 kmph



### DRIVE

2 Wheel Drive / 4 Wheel Drive



### ENGINE

Diesel Engine of TATA MOTORS make, Model 497 DI 38, Turbo charged water cooled, developing 49 Ps @ 2000 RPM



### TRANSMISSION & CLUTCH

Synchromesh Transmission Gearbox of TATA MOTORS make with Auxiliary Gearbox: Speeds-10 forward and 2 reverse.

Clutch Single, dry type friction clutch plate



### BRAKES

Service	Fully air operated 'S' cam brakes on rear axles & pneumatic assisted hydraulic brakes on front wheels.
Parking	Air operated, spring actuated, fail safe brakes on rear axle.



### AXLES

Front	Rigidly Mounted
Rear	Mounted with two semi-elliptical springs
Make	TATA



### TYRES

Total 8 nos. 11 x 20 - 16 PR



### HYDRAULIC SYSTEM

Main pump of 46 cc/rev  
Control Valve-6 spool double acting with a built in relief & auxiliary valve



### ELECTRICAL SYSTEM

12V, DC, Negative Earth  
120 AH Battery for Longer Life



### STEERING

Full Power orbitrol with twin hydraulic double acting rams  
40° articulation on either side



### BOOM

4 Parts boom, 3 Parts hydraulically powered & fully synchronized, 4<sup>th</sup> part power extended & manually pinned for safety.  
Luffing Angle - 10° to + 65°



### HOIST

Hydraulically operated winch with max line speed 50m/min  
Built in safety brakes



### DIMENSIONS

Wheel Base	3950 mm
Overall Length	10075 mm
Overall Width	2450 mm
Overall Height	3215 mm



### WHEEL TRACK

Front	1840 mm
Rear	1810 mm



### OPERATING WEIGHT

Front Axle	6060 kg
Rear Axle	10200 kg
Total	16260 kg



### TURNING RADIUS

7.2 m



### STANDARD ACCESSORIES

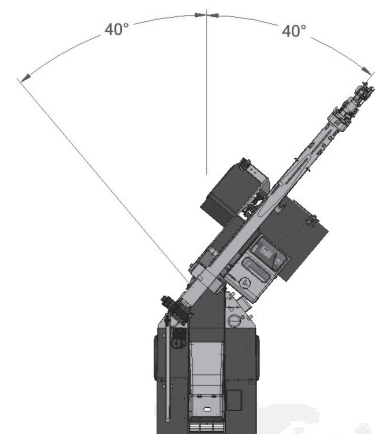
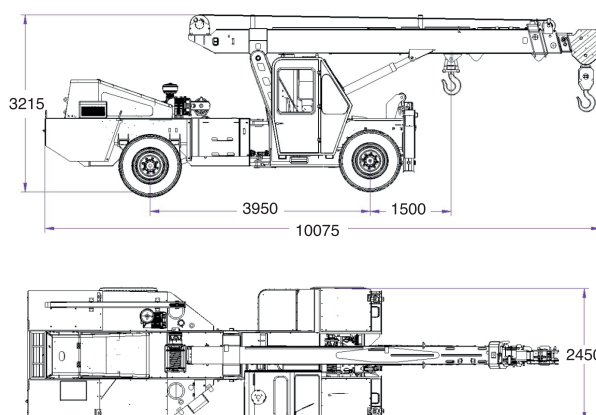
Outriggers  
Type Guard  
Reverse Camera



### OPTIONAL ACCESSORIES

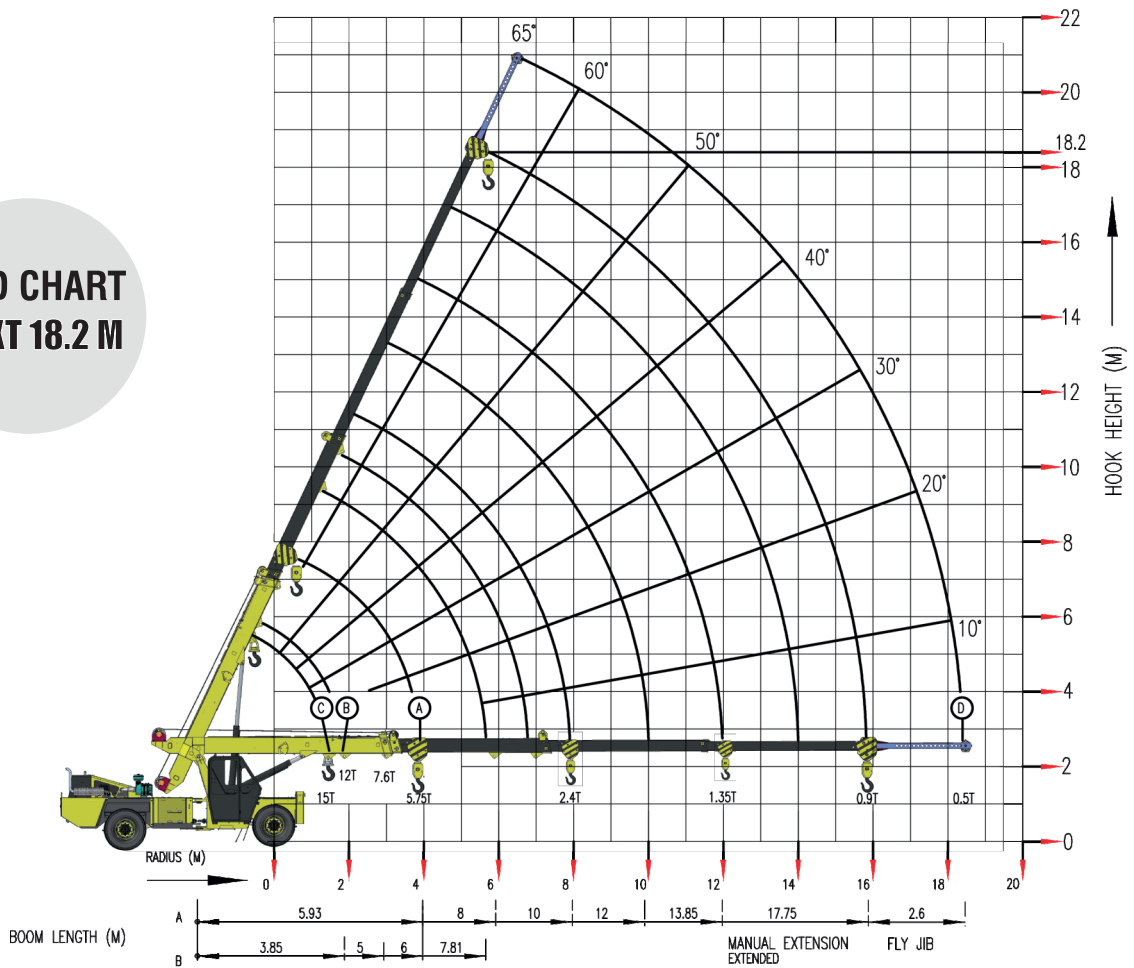
Fly Jib	Beacon Light
AC Cabin	Fire Extinguisher
RHINO Hook	Man Carrying Basket
Helper Seat with Platform	
Safe Load Indicator with Hydraulic Cutoff	
Equipment Monitoring System (Telematics)	

## TRX15 DIMENSIONS (Ref.) & AREA OF OPERATION



# TRX 15 49 XT 18.2 M

## LOAD CHART 49 XT 18.2 M



Radius (M)	A					MANUAL EXTENSION EXTENDED
	BOOM LENGTH IN METERS - MANUAL EXTENSION RETRACTED					
	5.93	8	10	12	13.85	17.75
2	7500	7500	7500			
3	7500	7500	6900	5200		
4	5750	5700	5070	4500	3970	
5		4500	4760	4000	3460	1680
6		3700	3525	3475	3100	1575
7			3100	2900	2750	1475
8			2400	2478	2400	1400
9				2130	2080	1320
10					1775	1250
11					1550	1180
12					1350	1135
13						1100
16						900
18						

B			
BOOM PIVOT TO INNER LUG 1ST JIB EXTN, MANUAL EXTN. RETRACTED			
3.85	5	6	7.81
12000	11000	11000	10550
	7000	7000	6700
		4800	4750
			3570

C	
15 LUG	
BOOM FULLY RETRACTED	
RADIUS (M)	S.W.L. (kg)
1.5	15000

D FLY JIB (BOOM FULLY EXTENDED)
750
750
700
700
600
650
600
500

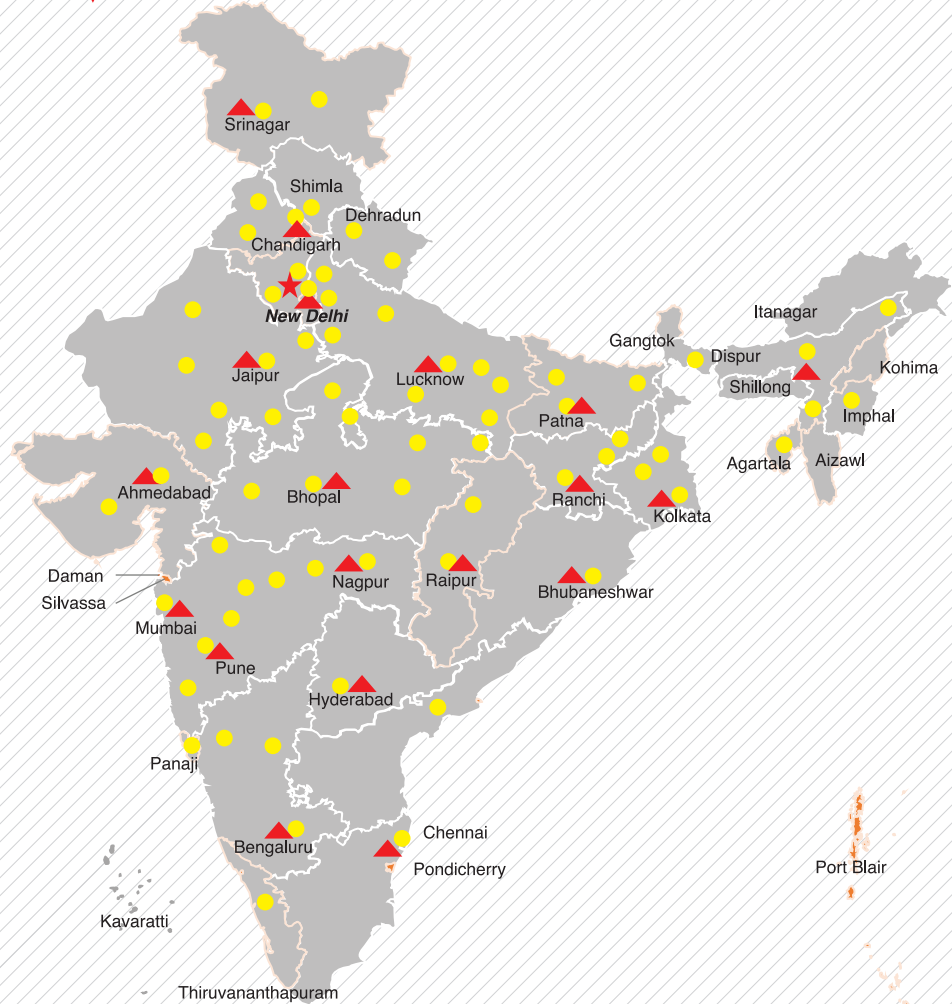
- RADIUS IS THE HORIZONTAL DISTANCE MEASURED FROM THE CENTRE OF FRONT WHEEL TO THE LOAD POINT
- S.W.L. ARE BASED ON 85% STABILITY & STRENGTH
- S.W.L. ARE BASED ON FIRM LEVEL GROUND WITH TYRES 11X20-16 PLY INFLATED TO 115 PSI, WEIGHT OF HOOKS, BLOCKS, SLINGS & CHAIN ETC. INCLUDED.
- LIFT & CARRY - THE S.W.L. SHALL BE CARRIED WITH THE MINIMUM BOOM LENGTH & AS CLOSE TO THE GROUND AS POSSIBLE AT SPEED NOT IN EXCESS OF 2 KMPH.
- BOOM HEAD MOUNTED RHINO HOOK CAPACITY-6000 KG

Rated loads are calculated for operation on leveled surface.

# TRX 15 49 XT 18.2 M



## OUR REACH



★ Head Office | ▲ 19 Business Center | ● 73 Dealers & 250+ branches | ■ PAN INDIA - 825+ Network to support as Service and Spares



**Toll Free No.:**  
**1800-180-4488**

(Timings: 9.30 am - 6.00 pm, Monday to Friday)

e-mail: [ece.help@escorts.co.in](mailto:ece.help@escorts.co.in)

**Escorts Construction Equipment:** Plot No. 219, Sector- 58, Ballabhgarh- 121 004, Faridabad, Haryana (INDIA) Tel.: 0129-2306574/2306598/2306571 Fax: 0129-2306572 Website: [www.escortsgroup.com](http://www.escortsgroup.com)

Authorised Dealer