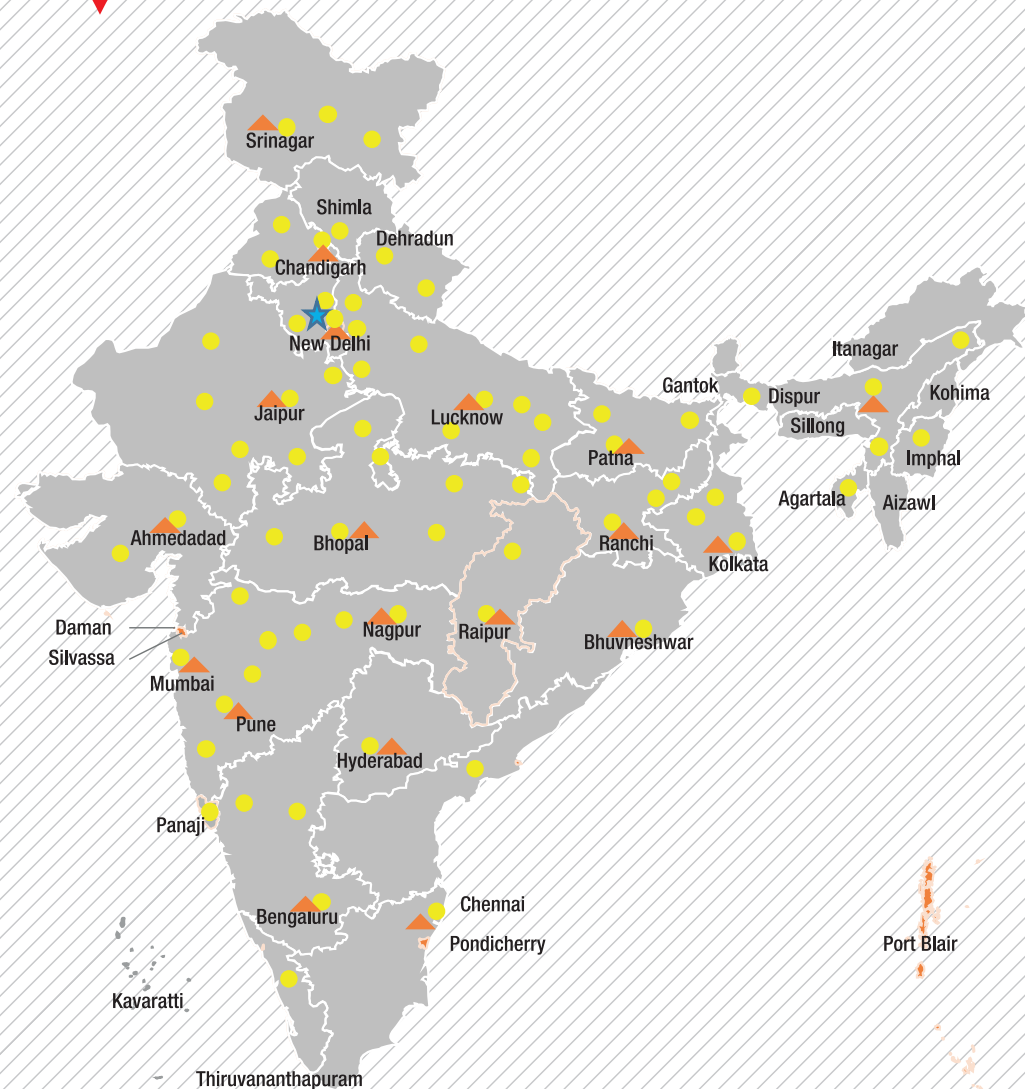


HYDRA 1565

OUR REACH



★ Head Office | ▲ 17 Business Center | ● 80+ Dealers | 200+ Customer Touch points(CTP)



Toll Free No.:
1800-180-4488

(Timings: 9.00 am - 5.30 pm, Monday to Saturday)

Escorts Kubota Limited (Construction Equipment)
Plot No. 219, Sector- 58, Ballabhgarh- 121 004, Faridabad, Haryana (INDIA)
Tel.: 0129-2306574/2306598/2306571
Fax: 0129-2306572 Website: www.escortskubota.com
e-mail: ekl_g.ece.marketing@escortskubota.com



GET IT ON
Google Play

Download Customer App
for more details

Authorised Dealer

MKT/24_11/Hydra 1565

(Accessories as shown in the picture may not be the part of standard fitment and are subject to change without prior notice.)

HYDRA 1565



Capacity
15 T



Boom Height Up To
21m



Service Interval (Engine)
500 Hrs



Straight Axle
Heavy Duty



Structure
Robust



- Escorts Kubota Engine
- CEV II Safety Compliant
- EMI & EMC Compliant
- Low Ear Level & Pass by Noise

SPECIFICATIONS

HYDRA 1565

RATED CAPACITY

15T at	1.6 m radius
1.2T at	15.6 m radius

ENGINE

Make & Model Escorts Kubota E4.391NA, CEV V, with ECU control, 4 cylinder Water cooled diesel engine developing 36kW/ 50 HP @2000 RPM or equivalent

*500 hrs service interval available in Escorts Kubota Engine

TRANSMISSION

Drive 2 Wheel Drive
Type Heavy duty transmission especially developed for crane application, constant mesh gearbox coupled with straight drive axle. 08 forward & 02 reverse speeds with high/low selector lever

Creep Speed 1.7 km/h, ideal for crane application

Max Speed 29 km/h (unladen)

Clutch Heavy Duty Cerametallic Clutch, asbestos free for longer life

STEERING

Type Articulated Power Steering, hydraulically controlled through 2 double acting jacks

Articulation Up To 54°
Turning Radius 6.75 m

BOOM

Telescoping Telescoping 4 part, 3 part hydraulically powered & fully synchronized, 4th part power extended & manually pinned.

Derricking Through double acting jacks
-5° Negative angle

Type Slotted boom with rope compensation

HOIST MECHANISM

Hoist 12T hydraulic winch, 6 falls with inbuilt safety brakes

Wire Rope 13 mm dia

BRAKES

Front Wheel 'S' cam pneumatically assisted actuated drum brakes

Rear Wheel Pneumatically actuated disc brakes

Parking Hand control valve operated, air assisted parking brake at front wheels

HYDRAULIC SYSTEM

Pump Vane type hydraulic pump

Control Valve 4 spool control valve with built in pressure relief valve and precision control

Hydraulic Filter Suction line has 100 mesh inline strainer while return line has 25 microns full flow filter

ELECTRICAL SYSTEM

Type 12V, Single Battery, Negative Earth

CAPACITIES

Fuel Tank 38 L
Hydraulic Tank 91 L

TYRES

Front 11.00 X 20 - 16 PR (4 no's.)
Pressure 110 - 115 PSI
Rear 13.00 X 24 - 12 PR (2 no's.)
Pressure 35 PSI, Water ballasted

OVERALL DIMENSIONS

Length 11.00 m
Height 3.47 m
Width 2.55 m

TRACK

Front 1.84 m
Rear 1.68 m

OPERATING WEIGHT (KG)

Gross Vehicle 13235 Kg
Weight

SAFETY SYSTEM

- Overload Audio Warning System
- Safety Brake on Hoist
- Cylinder Guard for Protection
- Counter Balance Protection Valve in the Lift Line against Hose Burst
- Visual Warning for Parking Brakes ON
- Low Air Pressure Warning Buzzer
- Inside Cabin Front & Rear Handles for Helper
- Neutral Safety Switch
- Regeneration text pop-up messages in Instrument Cluster

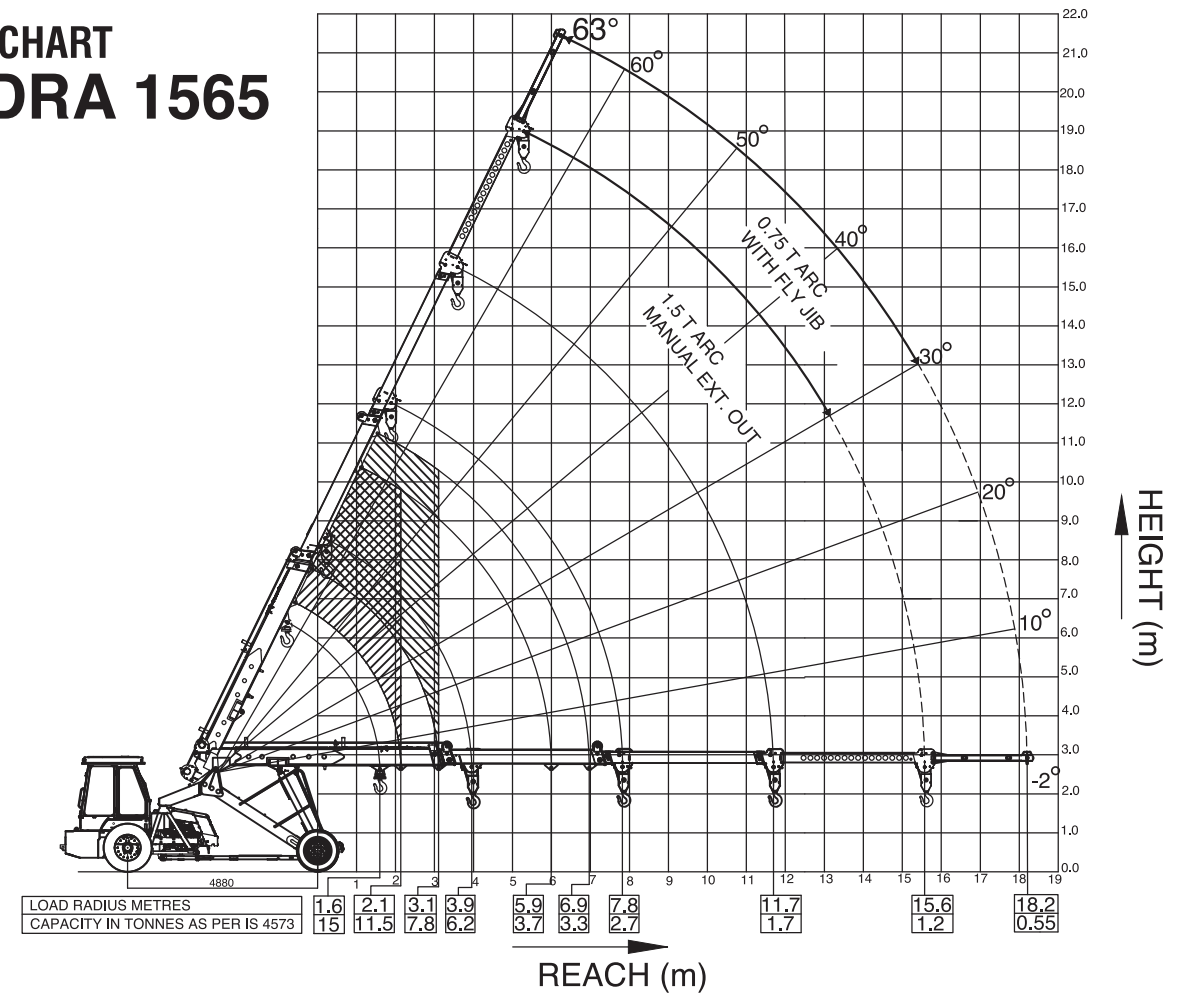
STANDARD ACCESSORIES

- All Weather Cabin
- Lift Cylinder Guard
- Front Bumper
- Turn & reverse Lamp
- Mobile Charging Socket
- Battery cut-off switch
- High reliability rocker switch
- Ignition Switch - ON/OFF
- IP67 sealed connectors in wiring harness
- Digital Instrument Cluster (CAN based)
- Driver Seat with Seat Belt
- Rear Tyre Mud Gaurd
- Extra Rear Foot Step

OPTIONAL ACCESSORIES

- Fly Jib
- Fire Extinguisher
- Safe Load Indicator
- Hydraulic Cut-off Kit
- Front Cabin Top Light
- Utility Box
- Tyres
- Rear - 14 X 24 - 16 PR Tyre
- Rear - 14 X 25 - 20 PR Tyre
- Front - 11 X 20 - 16 PR Tyre

LOAD CHART HYDRA 1565



Rated loads are calculated for operation on leveled surface.

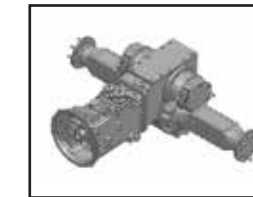
*Fly Jib is not a standard part of the machine.

FEATURES



BOOM

Slotted boom with rope compensation for precision handling & auto leveling of loads.



TRANSMISSION

Constant mesh transmission 8F, 2R having less noise and longer components life.



INSTRUMENT CLUSTER

Digital cluster (CAN based) with all gauges & engine fault code detection.

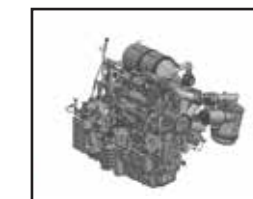
ROCKER SWITCHES

Reliable and low effort Rocker Switch with better aesthetic appearance



HYDRAULIC WINCH

12T Capacity with 6 falls snatch block for precision handling & built-in safety brakes



ENGINE

Escorts Kubota CEV V electronic engine with turbo air pre-cleaner.



STEERING

Long steering cylinder having bigger rod dia for enhanced side stability and maneuverability. Cylinder protection guard provided.