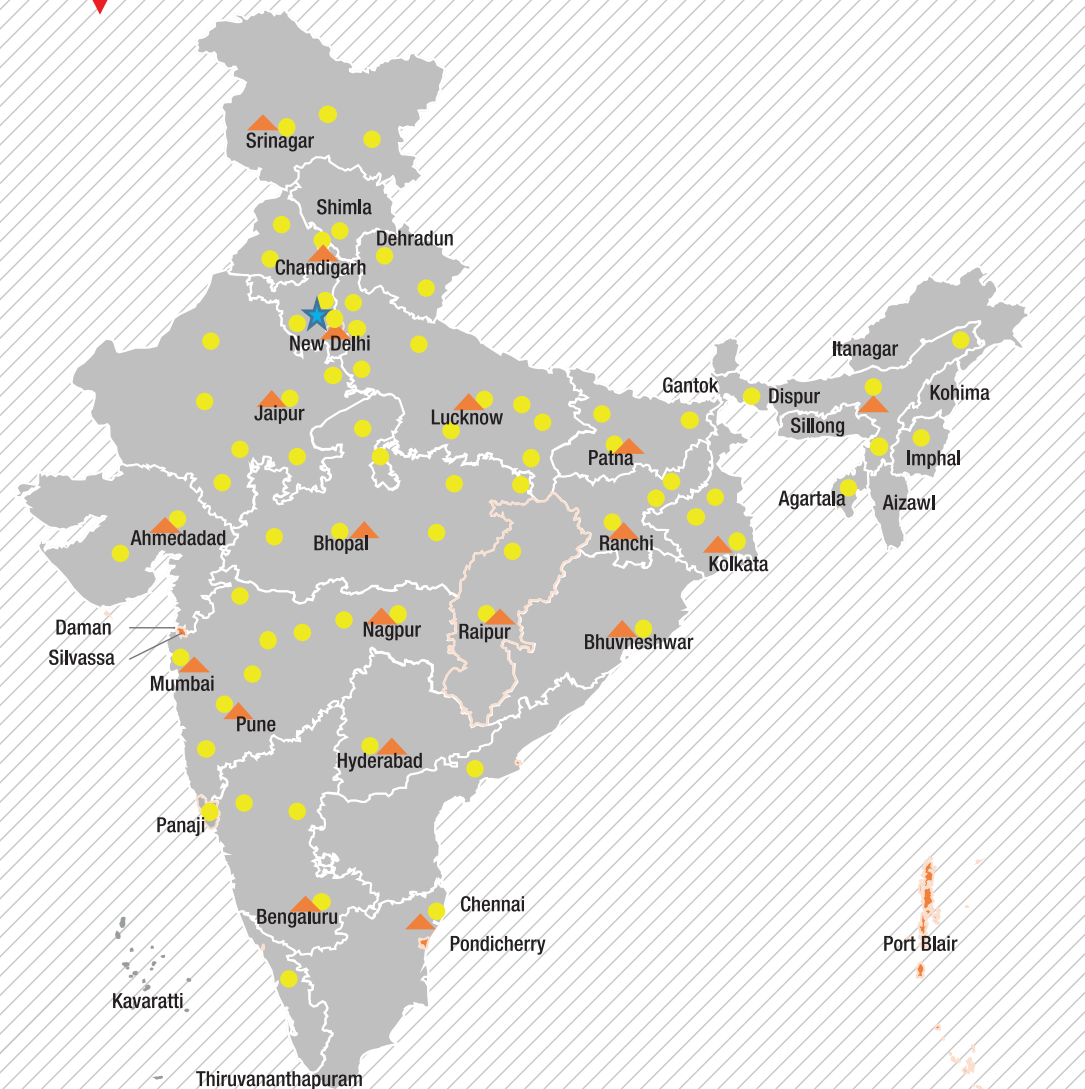


# HYDRA 12 TOP JACK

## OUR REACH



★ Head Office | ▲ 17 Business Center | ● 80+ Dealers | 200+ Customer Touch points(CTP)



**Toll Free No.:**  
**1800-180-4488**

(Timings: 9.00 am - 5.30 pm, Monday to Saturday)

Escorts Kubota Limited (Construction Equipment)  
Plot No. 219, Sector- 58, Ballabhgarh- 121 004, Faridabad, Haryana (INDIA)  
Tel.: 0129-2306574/2306598/2306571  
Fax: 0129-2306572 Website: [www.escortskubota.com](http://www.escortskubota.com)  
e-mail: [ekl\\_g.ece.marketing@escortskubota.com](mailto:ekl_g.ece.marketing@escortskubota.com)



GET IT ON  
**Google Play**  
Download Customer App  
for more details

Authorised Dealer

MKT/24-11/Hydra 12 TOP JACK

(Accessories as shown in the picture may not be the part of standard fitment and are subject to change without prior notice.)

## HYDRA 12 TOP JACK



Capacity  
**12 T**



Boom Height  
**11 m**



Service Interval (Engine)  
**500 Hrs**



Straight Axle  
**Heavy Duty**



Structure  
**Robust**



- Escorts Kubota Engine
- CEV II Safety Compliant
- EMI & EMC Compliant
- Low Ear Level & Pass by Noise

## SPECIFICATIONS

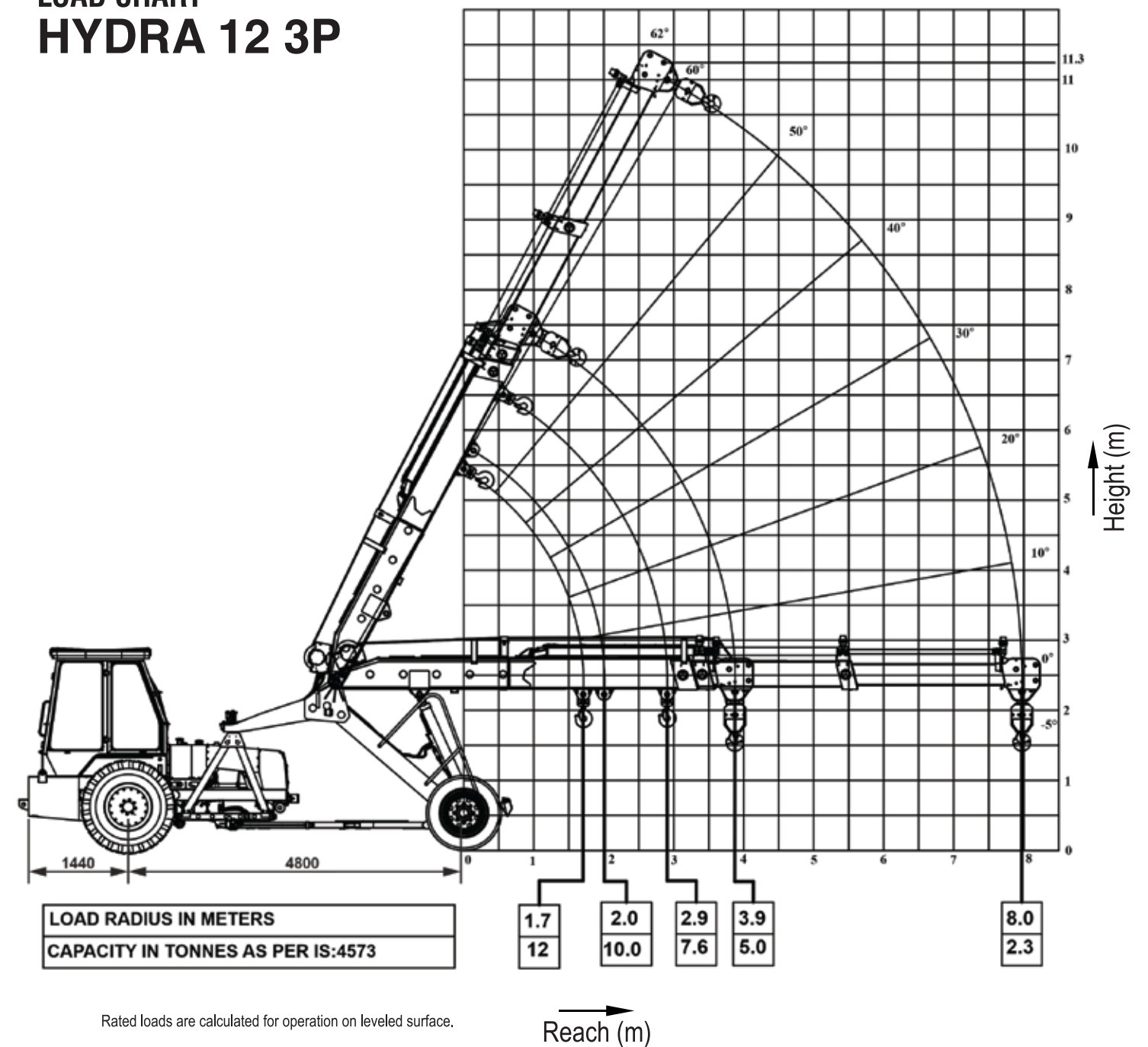
<b>RATED CAPACITY</b>	12T at 1.7 m radius 8T at 2.3 m radius
<b>ENGINE</b>	Escorts Kubota E4.391NA, CEV V with ECU control, 4 cylinder, water cooled Diesel Engine developing 50HP @2000 RPM or equivalent  *500 hrs service interval available in Escorts Kubota Engine
<b>TRANSMISSION</b>	Drive 2 Wheel Drive Type Heavy duty transmission especially developed for crane application, constant mesh gearbox coupled with straight drive axle. 08 forward & 02 reverse speeds with high/low selector lever  Creep Speed 1.7 km/h, ideal for crane application Max Speed 29 km/h (unladen) Clutch Heavy duty cerametallic clutch, asbestos free for longer life
<b>STEERING</b>	Type Articulated power steering, hydraulically controlled through 2 double acting jacks  Articulation Up To 54° Turning Radius 6.3 m
<b>BRAKES</b>	Front Wheel 'S' cam pneumatically actuated drum brakes  Rear Wheel Pneumatically actuated disc brakes Parking Hand control valve operated, air assisted parking brake at front wheels
<b>BOOM</b>	Telescoping Telescoping, 3 Part, box type, heavy duty boom, hydraulically operated, through 2 Jacks at boom top  Derricking Through double acting Jacks -5° Negative angle
<b>HOIST MECHANISM</b>	Hoist 4 Falls, hydraulic winch 10T capacity with inbuilt safety brakes  Wire Rope 13 mm dia
<b>HYDRAULIC SYSTEM</b>	Pump Vane type Hydraulic Pump Control Valve 4 spool control valve with built in pressure relief valve and precision control  Hydraulic Filter Suction Line has 100 mesh inline strainer while return line has 25 microns full flow filter

<b>ELECTRICAL SYSTEM</b>	Type 12V, Single Battery, Negative Earth
<b>TYRES</b>	Front 10.00 x 20 - 16 PR (4 no's.) Pressure 110-115 PSI Rear 13.00 x 24 - 12 PR (2 no's.) Pressure 35 PSI, Water ballasted
<b>TRACK</b>	Front 1.84 m Rear 1.68 m
<b>CAPACITIES</b>	Fuel Tank 50 L Hydraulic Tank 70 L
<b>OVERALL DIMENSIONS</b>	Length 1.05 m Width 2.41 m Height 3.05 m
<b>OPERATING WEIGHT (KG)</b>	Gross Vehicle Weight 10300 Kg
<b>SAFETY SYSTEM</b>	<ul style="list-style-type: none"> <li>• Overload Audio Warning System</li> <li>• Safety Brake on Hoist</li> <li>• Cylinder Guard for Protection</li> <li>• Counter Balance Protection Valve in the Lift Line against Hose Burst</li> <li>• Visual Warning for Parking Brakes ON</li> <li>• Low Air Pressure Warning Buzzer</li> <li>• Inside Cabin Front or Rear Handles for Helper</li> <li>• Neutral Safety Switch</li> <li>• Regeneration text pop-up messages in Instrument Cluster</li> </ul>
<b>STANDARD ACCESSORIES</b>	<ul style="list-style-type: none"> <li>• All Weather Cabin</li> <li>• Lift Cylinder Guard</li> <li>• Front Bumper</li> <li>• Turn &amp; Reverse Lamp</li> <li>• Driver Seat with Seat Belt</li> <li>• Mobile Charging Socket</li> <li>• Battery Cut-off Switch</li> <li>• High Reliability Rocker Switch</li> <li>• Ignition Switch - ON/OFF</li> <li>• IP67 Sealed Connectors in Wiring Harness</li> <li>• Digital Instrument Cluster (CAN based)</li> <li>• Rear Tyre Mud Guard</li> <li>• Extra Rear Foot Step</li> </ul>
<b>OPTIONAL ACCESSORIES</b>	<ul style="list-style-type: none"> <li>• Fly Jib</li> <li>• Fire Extinguisher</li> <li>• Safe Load Indicator</li> <li>• Hydraulic Cut-off Kit</li> <li>• Front Cabin Top Light</li> <li>• Utility Box</li> <li>• 6 Fall Snatch Block</li> <li>• Over Hoist Kit</li> <li>• Tyres</li> <li>• Rear - 14 X 24 - 16 PR HD</li> <li>• Rear - 14 X 25 - 20 PR HD</li> <li>• Front - 11 X 20 - 16 PR</li> </ul>

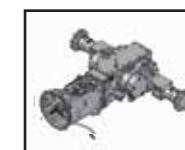
**NOTE** Technical modification reserved. All dimensions, speed & weights are variable within ± 5% over indicated values.

# HYDRA 12 TOP JACK

## LOAD CHART HYDRA 12 3P



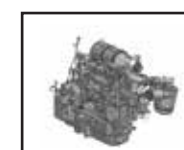
## FEATURES



**TRANSMISSION**  
Constant mesh transmission 8F, 2R having less noise and longer components life.



**INSTRUMENT CLUSTER**  
Digital cluster (CAN based) with all gauges & engine fault code detection.



**ENGINE**  
Escorts Kubota CEV V electronic engine with turbo air pre-cleaner.



**EASE IN SERVICE**  
Easy access and maintenance of:  
- Hydraulic & diesel tank



**STEERING**  
Long steering cylinder having bigger rod dia for enhanced side stability and maneuverability. Cylinder protection guards as standard.



**ROCKER SWITCHES**  
Reliable and low effort Rocker Switch with better aesthetic appearance.