

OPTIONAL SAFETY FEATURE

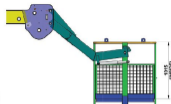
- Outrigger Home Position Sensing System (OHPSS)**
 Whenever outrigger leaves its home position then blow audio alert and indicator arises
- Use of 1st & Reverse Gear For Craning Operation: Speed \leq 2 km/h**
 Audio Alarm will Blow
- Mandatory Outrigger Mechanism For Erection Jobs**
 Whenever boom open more than 10 m & 39°, An alarm will blow for opening outrigger for safe operation
- Retraction Of Forward Movement In Engaged Outrigger Condition**
 When outrigger is in open condition audio alert will blow
- Safe Mode Operation (No Bypassing Allowed)**
 Safe mode operation while overloading/unsafe condition by restricting lifting load, opening boom and lift down operation
- Lateral & Longitudinal Angle System (Unsafe Stability)**
 When machine is working in undulation ground / unsafe stability, alarm start blowing
- Anti-Topping System**
 Whenever rear axle leaves ground in case of undulation/off road craning operation, buzzer will beep and brake will applied
- Human Proximity Sensor**
 Whenever human or any obstructions come near machine, sensors will get activated mounted on front, LH & RH side
- Integration of SLI With Telematics**
 SLI data available on telematic server and mobile application

ACCESSORIES

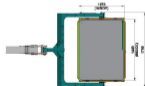
MAN CARRYING BASKET

ATTACHMENT SPECIFICATION	
ATTACHMENT WEIGHT	kg. 240
MAX. CAPACITY	kg. 235
NO. OF PERSONS	1 st 2
PLATFORM LENGTH	mm. 1840
PLATFORM WIDTH	mm. 1270

Intended use
 The machine has been designed to lift people and handle small tool, max load 235 kg or 2 persons



ATTACHMENT DIMENSIONS



BE CAREFUL!

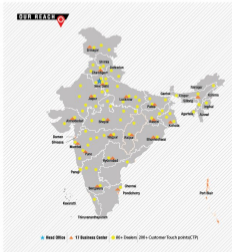
When in the firm the same machine is to be used by more than one operator, working instructions as well as the use and maintenance manual must be conveyed to all the operators in charge of the machine.



Toll Free No.:
1800 - 180 - 4488
(Dial 101 or 501 on Monday to Friday)

Escorts Kubota Limited (Construction Equipment)
 Plot No. 219, Sector-58, Saket/Agarh- 121 061, Faridabad, Haryana (INDIA)
 Tel.: 0129-2306574/2300698/2306571
 Fax: 0129-2306572 Website: www.escortskubota.com
 e-mail: ekl_g_eo_marketing@escortskubota.com

*The information contained in this bulletin is intended for general information only. It is subject to change without prior notice. All dimensions and weights are subject to change without prior notice.



ADDRESS:

North Zone
ESCORTS KUBOTA LTD. - CONSTRUCTION EQUIPMENT
 4th Floor, 403, DLF Tower B, Jasola Apollo, New Delhi – 110025

East Zone
ESCORTS KUBOTA LTD. - CONSTRUCTION EQUIPMENT
 Eco Centre, Ambuja Neotia, 609, 6th Floor, EM Block, Salt Lake City Sector-V, Kolkata – 700091

West Zone
ESCORTS KUBOTA LTD. - CONSTRUCTION EQUIPMENT UNIT 1,
 3rd Floor, A-Wing, Times Square, Andheri - Kurla Road, Opp. Mittal Industrial Estate, Andheri (East), Mumbai – 400059

South Zone
ESCORTS KUBOTA LTD. - CONSTRUCTION EQUIPMENT
 Subham Square, 1st Floor, S.No.41/9, 1st Main Road, Karambakam, Porur, Chennai – 600116



MKT/04.11/F.23



- VECV E494 Engine
- CEV II Safety Compliant
- EMI & EMC Compliant
- Low Ear Level & Pass by Noise

- COMFORTABLE** LOW PEDAL FORCE
- ECONOMICAL** XTRA FUEL SAVING
- DURABLE** XTRA CLUTCH LIFE
- POWERFUL** HIGH TORQUE
- HASSLE-FREE** 500 HRS SERVICE INTERVAL

F 23



Capacity
23 T

Boom Height (With Fly Jib)
22.3 m

Scratch Block
15T Lifting

Crawl Speed
1.3 km/h

Axle
Heavy Duty

SPECIFICATIONS

1. RATED CAPACITY

23 T at 1.5 m radius
 900 kg at 16.6 m radius
 Max Height 22.2 m
 SWL based on 85% stability & strength (S 4573)

2. VEHICLE PERFORMANCE

Speed Max 40 km/h
 Creep Speed 1.3 km/h

3. DRIVE

4 Wheel Drive

4. ENGINE

VEICV motor E-404, CEV Stage V diesel engine, high pressure common rail system (HPCR) technology, turbo charged water cooled, ECU control engine management system, developing 74 kW/101 HP @ 2200 RPM or equivalent engine

5. TRANSMISSION & CLUTCH

Engine is coupled with synchromesh transmission gear box and auxiliary gear box with high/low & 2WD/4WD mode selector

Clutch Single, dry type friction clutch plate (self adjusting)
 Clutch Actuation Pneumatic assisted hydraulic clutch
 Speeds 10 forward & 2 reverse
 Gradeability 40% unladen

6. BRAKES

Service Brakes Fully air operated brakes on front and rear wheels
 Parking Brakes Air operated, spring actuated, ball safe brakes on front and rear wheels

7. TYRES

8 nos. - 12 x 24 - 20 PLY

8. STEERING

Full power orbital with twin hydraulic double acting rams
 40° articulation on either side

9. HYDRAULIC SYSTEM

Main Pump Tandem hydraulic vane pump
 Control Valve Main control valve 3 spool double acting with a built in relief & auxiliary valves
 Outrigger Control Valve 2 spool double acting
 Drag Winch Single spool double acting
 Control Valve

10. AXLES

Front Heavy duty rigidly mounted hub reduction drive axle
 Rear Mounted with semi-elliptical springs, hub reduction drive axle
 Make TATA

11. ELECTRICAL SYSTEM

12V DC Negative Earth 150 Ah Battery

12. BOOM

4 parts boom, 3 parts hydraulically powered & fully synchronized, 4th part power extended & manually pinned for safety
 Luffing range: - 2° to + 65°

13. HOIST

15T hydraulically operated with 6 falls
 Built in safety brakes

14. WHEEL BASE

4.88 m

15. CAPACITIES

Fuel Tank 270 L
 Hydraulic Tank 195 L

16. DIMENSIONS

Overall Length 10.90 m
 Overall Width 2.70 m
 Overall Height 3.30 m

17. WHEEL TRACK

Front 1.90 m
 Rear 1.90 m

18. OPERATING WEIGHT TRAVEL WORK

Front Axle 8930 kg 8900 kg
 Rear Axle 10130 kg 13050 kg
 Total 18960 kg 21950 kg
 (Road traveling allowed without boltable counter weights)

19. TURNING RADIUS

8.25 m

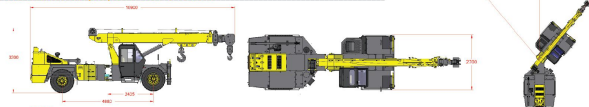
20. STANDARD ACCESSORIES

- All Weather Cabin with Unrestricted Visibility
- Rear View Camera with LCD
- Equipment Monitoring System (Telematics)
- Front Outriggers
- Wheel Guards
- Mobile Charger Socket
- Battery Cut-off Switch
- Auto Levelling Hook Block
- Projector Head Lamp
- LED Work Lamp
- LED Cabin Lamp

21. OPTIONAL ACCESSORIES

- Safe Load Indicator with Hydraulic Cut-Off
- Man Carrying Basket
- Fire Extinguisher
- Fly Jib
- Helper Seat Platform
- Drag Winch
- Fibres Hook

F23: DIMENSIONS (Ref.) & AREA OF OPERATION



NOTE: Technical modification reserved. All dimensions, speed & weights are variable within ± 5% over indicated values.

LOAD CHART F23

RADIUS (M)	BOOM LENGTH (L) IN METERS					MANUAL EXT. EXTENDED	FLY JIB
	6.4	8	10	12	15		
1.5	15000					18.9	21.4
2	15000	11200	11000				
3	12500	10500	9600	7300			
4	10000	8900	7300	6200	5500		
5		6800	6350	5600	4800		
6			5500	4700	4300	2000	
7				5000	3900	3800	
8					3500	3100	
9					2700	2550	
10						2400	1000
11						2200	1500
12						2100	
13						1900	
14							
15						1200	
16						1000	500
17						950	
18							
19							

RADIUS (M)	SLIDING LUG-FIRST EXTENSION (MANUAL EXTN. RETRACTED)		
	5.6	8	10
1.5			
2			
3	12500	11000	10200
4	9000	7800	
5	7000	6600	
6		5500	
7			5000

23T SAFE CRANE
 4P BOOM, 20.1 mtrs.

FRONT/REAR TYRE (DUAL)
 TYRE SIZE: 12x24-20PR
 AIR PRESSURE - 120 PSI MAX.

S.W.L. in Kgs, Length & Radius in Meters

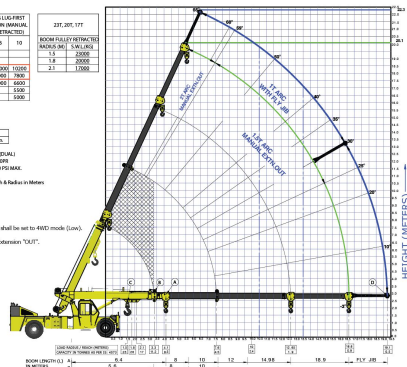
- Notes:
- Rated Loads are calculated for operation on levelled surface.
 - Rated Load lifting capacity in full articulation condition.
 - S.W.L. based on 85% stability & strength as per IS-4573.
 - Travel speed with rated load not to exceed 2.00PH. Auxiliary Gear Box (AGB) shall be set to 4WD mode (Low).
 - Use Outrigger for erection work.
 - Use 6 Falls rope while Manual Extension "IN" & Use 4 Falls rope while Manual Extension "OUT".
 - Area enclosed by red double line denotes structural limitations.

HEAVY DUTY AXLE

40 Ton capacity front axle for heavy load applications



*Image for reference purpose only



FEATURES



HYDRAULIC CLUTCH

Low effort Hydro Pneumatic Clutch to reduce operator fatigue



ECU EMS SYSTEM

ECU EMS - Electronic Control Unit for Engine Management System for engine diagnosis and troubleshooting



HPCR SYSTEM

HPCR - High Pressure Common Rail System - PCR provide cleaner exhaust, deliver more horsepower and fuel efficiency per displacement



CLUSTER

Single digital with all gauges, fault code detection for engine system. Regeneration text pop-up flashed on display for operator convenience



LED WORK LAMP

LED work lamp for night operation with high range visibility

ELECTRONIC ACCELERATOR PEDAL

Low effort Hydro Pneumatic Clutch to reduce operator fatigue



IGNITION ON/OFF

Ignition Key to switch off engine, no more use of stop cable to engine put off



ROCKER SWITCHES

Rocker Switch with more reliable and better weathering appearance, low operator fatigue



DIESEL PARTICULATE FILTER (DPF)

Extra Protection to DPF Regeneration Switch



TELEMATICS

Telematics ensures 24x7 machine monitoring & alerts, location tracking, fuel level, coolant temp, oil pressure & machine service reminder

