

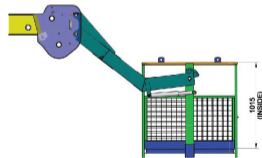
MAN CARRYING BASKET

ATTACHMENT SPECIFICATION		
ATTACHMENT HEIGHT	KG	240
MAX. CAPACITY	KG	235
NO. OF PERSONS	N°	2
PLATFORM LENGTH	MM	1440
PLATFORM WIDTH	MM	1070

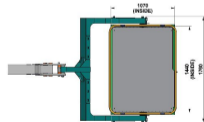
Intended use  
The machine has been designed to lift people and handle small tool, max load 235 kg or 2 persons



**BE CAREFUL!**  
When in the firm the same machine is to be used by more than one operator, working instructions as well as the use and maintenance manual must be conveyed to all the operators in charge of the machine.



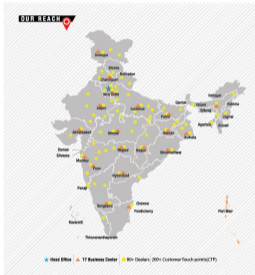
ATTACHMENT DIMENSIONS



**Toll Free No.:**  
**1800-180-4488**  
(Usage for all. ₹30 per minute + GST)

Escorts Kubota Limited (Construction Equipment)  
Plot No. 219, Sector - 59, Gurgaon Road - 121 004, Faridabad, Haryana (INDIA)  
Tel.: 0129-230657/42236698/2306571  
Fax: 0129-2306572 Website: www.escortskubota.com  
e-mail: ekt\_g\_eeo\_marketing@escortskubota.com

\*The information contained in this leaflet is intended to be of a general nature only. It does not constitute an offer. All dimensions and weights are variable within 10%.



ADDRESS:

**North Zone**  
**ESCORTS KUBOTA LTD. - CONSTRUCTION EQUIPMENT**  
4<sup>th</sup> Floor, 403, DLF Tower B, Jasola Apollo,  
New Delhi - 110025

**East Zone**  
**ESCORTS KUBOTA LTD. - CONSTRUCTION EQUIPMENT**  
Eco Centre, Ambuja Neotia,  
609, 6<sup>th</sup> Floor, EM Block,  
Salt Lake City Sector-V, Kolkata - 700091

**West Zone**  
**ESCORTS KUBOTA LTD. - CONSTRUCTION EQUIPMENT UNIT 1,**  
3<sup>rd</sup> Floor, A-Wing, Times Square,  
Andheri - Kurla Road, Opp. Mittal Industrial Estate,  
Andheri (East), Mumbai - 400059

**South Zone**  
**ESCORTS KUBOTA LTD. - CONSTRUCTION EQUIPMENT**  
Subham Square, 1<sup>st</sup> Floor, S.No.41/9, 1<sup>st</sup> Main Road,  
Karambakkam, Porur, Chennai - 600116



MKTOR 11/F FIGHTER

# F15 FIGHTER



- VECV Engine
- CEV II Safety Compliant
- EMI & EMC Compliant
- Low Ear Level & Pass by Noise

- COMFORTABLE LOW PEDAL FORCE
- ECONOMICAL XTRA FUEL SAVING
- DURABLE XTRA CLUTCH LIFE
- HASSLE-FREE 500 HRS SERVICE INTERVAL



Capacity  
**15 T**

Boom Height (With Fly Jib)  
**21 m**

Structure  
**High Strength**

Creep Speed  
**1.3 Km/h**

Turning Radius  
**Shortest**

Accessories as shown in the picture may not be the part of standard fitment and are subject to change without prior notice.

## SPECIFICATIONS

### RATED CAPACITY

15 T at	1.5 m radius
900 kg	15.80 m radius
Max Height	18.20 m

### VEHICLE PERFORMANCE

Speed Max	42 km/h
Creep Speed	1.3 km/h
Gradesability	40% unladen

### DRIVE

4 Wheel Drive

### ENGINE

VECV make CEV Stage V diesel engine, turbo charged water cooled, ECU control engine management system, developing 55 kW/75 HP @2200 RPM or equivalent engine

### TRANSMISSION & CLUTCH

Engine is coupled with synchromesh transmission gear box and auxiliary gear box with high/low & 2WD/4WD mode selector

Clutch	Single, dry type friction clutch plate (self adjusting)
Clutch Actuation	Pneumatic assisted hydraulic clutch
Speeds	10 forward & 2 reverse with AGB

### AXLES

Front	Rigidly mounted
Rear	Mounted with two semi-elliptical springs
Make	Tata or equivalent

### TYRES

8 nos. -11 x 20-16PR

### HYDRAULIC SYSTEM

Main Pump	Vane type pump of 46 cc/rev
Control Valve	Main control valve 3 spool double acting with a built in relief & auxiliary valves
Outrigger Control Valve	2 spool double acting

### STEERING

Full power orbitrol with twin hydraulic double acting rams 36.3° articulation on either side

### BRAKES

Service	Fully air operated 'S' cam dual circuit brakes on front & rear axles
Parking	Air operated, spring actuated, fail safe brakes

### ELECTRICAL SYSTEM

12V DC Negative Earth, 120 Ah Battery

### BOOM

4 parts boom, 3 parts hydraulically powered & fully synchronized, 4<sup>th</sup> part power extended & manually pinned for safety  
Luffing range: -10° to +65°

### HOIST

Hydraulically operated with 4 falls  
Built in safety brakes

### DIMENSIONS

Overall Length	10.08 m
Overall Width	2.45 m
Overall Height	3.21 m

### WHEEL TRACK

Front	1.81 m
Rear	1.81 m

### F15 FIGHTER: DIMENSIONS (Ref.) & AREA OF OPERATION



NOTE Technical modification reserved. All dimensions, speed & weights are variable within ± 5% over indicated values.

### OPERATING WEIGHT

Front Axle	7070 kg
Rear Axle	10070 kg
Total	17140 kg

### TURNING RADIUS

7.2 m

### STRUCTURE & STABILITY

Robust high strength light weight chassis  
Lower CG position & better stability

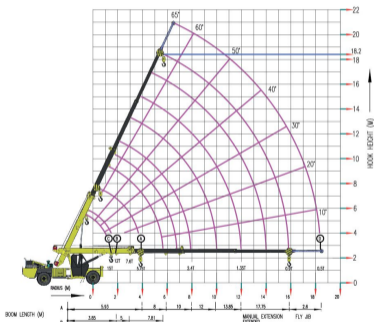
### STANDARD ACCESSORIES

- All Weather Cabin with Unrestricted Visibility
- Rear View Camera with LCD
- Equipment Monitoring System (Telematics)
- Front Outriggers
- Wheel Guards
- Streo and Mobile Charger Socket
- Battery Cut-off Switch
- Auto Leveling Hook Block
- Projector Head Lamp
- LED Work Lamp
- LED Cabin Lamp

### OPTIONAL ACCESSORIES

- Safe Load Indicator with Hydraulic Cut-off
- Man Carrying Basket
- Fire Extinguisher
- Fly Jib
- Helper Seat Platform
- Drag Winch
- Rhino Hoop

## LOAD CHART F15 FIGHTER



RADIUS (M)	BOOM LENGTH IN METRES - MANUAL EXTENSION RETRACTED						MANUAL EXTENSION EXTENDED			
	5.93	8	10	12	13.85	17.75	3.85	5	6	7.81
2	7500	7500	7500				12000	11000	11000	12500
3	7500	7500	8900	5200			7000	7000	6300	
4	5750	5700	5670	4500	3970			4800	4750	
5	4400	4750	4000	3480	1680				3570	
6	3600	3525	3475	3190	1575					
7			2900	2900	2750	1475	FLY JIB/BOOM FULLY EXTENDED			
8			2400	2478	2400	1400	750			
9			2130	2080	1320		750			
10							700			
11					1550	1180	700			
12					1350	1135	600			
13						1100	600			
16						900	600			
18							500			

- RATED LOAD LIFTING CAPACITY IN FULL ARTICULATION CONDITION
- RADIUS IS THE HORIZONTAL DISTANCE MEASURED FROM THE CENTRE OF FRONT WHEEL TO THE LOAD POINT
- WHEEL TO THE LOAD POINT
- S.W.L. ARE BASED ON 85% STABILITY & STRENGTH
- S.W.L. ARE BASED ON FIRM LEVEL GROUND WITH TYRES 11X20-16 FLY INFLATED TO 115 PSI/WEIGHT OF HOOKS, BLOCKS, SLINGS & CHAIN ETC. INCLUDED.
- LIFT & CARRY - THE S.W.L. SHALL BE CARRIED WITH THE MINIMUM BOOM LENGTH & AS CLOSE TO THE GROUND AS POSSIBLE AT SPEEDS NOT IN EXCESS OF 2 KM/HR.
- BOOM HEAD MOUNTED RHINO HOOK CAPACITY-5000 KG

Rated loads are calculated for operation on leveled surface.

## FEATURES

### HYDRAULIC CLUTCH

Low effort Hydro Pneumatic Clutch to reduce operator fatigue

### ECU EMS SYSTEM

ECU EMS - Electronic Control Unit for Engine Management System for engine diagnosis and troubleshooting

### HPCR SYSTEM

HPCR - High Pressure Common Rail System - PCR provide cleaner exhaust, deliver more horsepower and fuel efficiency per displacement

### CLUSTER

Single digital with all gauges, fault code detection for engine system. Regeneration test pop-up flashed on display for operator convenience

### LED WORK LAMP

LED work lamp for night operation with high range visibility

### ELECTRONIC ACCELERATOR PEDAL

Low effort Hydro Pneumatic Clutch to reduce operator fatigue

### IGNITION ON/OFF

Ignition Key to switch off engine, no more use of stop cable to engine put off

### ROCKER SWITCHES

Rocker Switch with more reliable and better aesthetic appearance, low operator fatigue

### DIESEL PARTICULATE FILTER (DPF)

Extra Protection to DPF Regeneration Switch

### TELEMATICS

Telematics ensures 24x7 machine monitoring & alerts, location tracking, fuel level, coolant temp, oil pressure & machine service reminder