

# EG SERIES

Screw Air Compressor

The Technological Edge  
To Power Your Business

11 – 250 kW / 15 – 300 HP (50/60 Hz)

**ELGI**<sup>®</sup>  
Always Better.



# EG SERIES

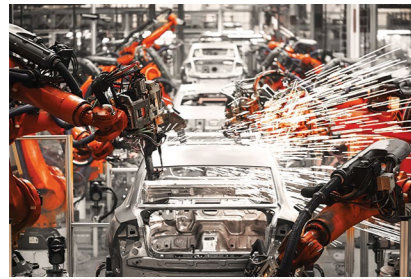
Superior Energy Efficiency | Low Total Cost Of Ownership  
Industry Leading Warranty | Best-In-Class Reliability

## Power consumption on your mind?

Around the world, changes are being made in the way businesses are powered, and in general, the way compressed air is used as a power in everyday life. These changes have implications for companies, governments, and individuals in the future.

Automotive, Chemical, Food and Beverage, Fast Moving Consumer Goods, Cement, Packaging, Pharmaceuticals, Textile, Ceramics industries and workshops rely heavily on compressed air. These industries fuel the world's economy.

## Applications



Automotive



Food and Beverage



Cement



Packaging



Mining



Agriculture



Textile



Ceramic



Manufacturing

# EG SERIES

THE ECO-FRIENDLY ENERGY-EFFICIENT COMPRESSOR



With high energy costs, revised regulatory and sustainability goals, and increasing competition, it is a continuous challenge for plant managers to reduce costs, achieve high productivity and improve energy efficiency.

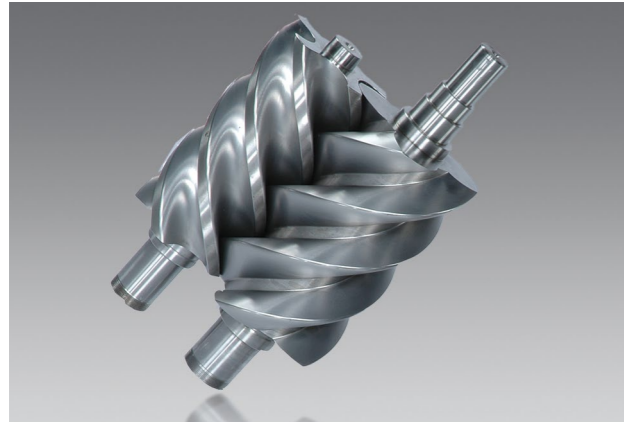
For industries using air compressors for day-to-day operations, the energy cost has become a top concern. ELGi's screw compressors are engineered to be energy efficient and environmentally friendly to minimise energy costs for customers.

The airend's screw elements are manufactured in-house using state-of-the-art machining centres. ELGi is one of the few companies capable of design and manufacturing a wide range of oil lubricated and oil free airends.

ELGi's patent portfolio is a testament to the company's continuous research and innovation capabilities.

\* All images are for representative purpose only. Actual product may vary.

**Features and Benefits**



**Highly Efficient Airend**  
Superior Energy Efficiency

ELGi's unique airends are equipped with in-house developed η-V profile rotors, with 4/5 lobe combination. The rotors are designed to run at low speeds to increase efficiency and life. The unique airend supplies compressed air for all demanding applications while ensuring minimal impact on the environment.



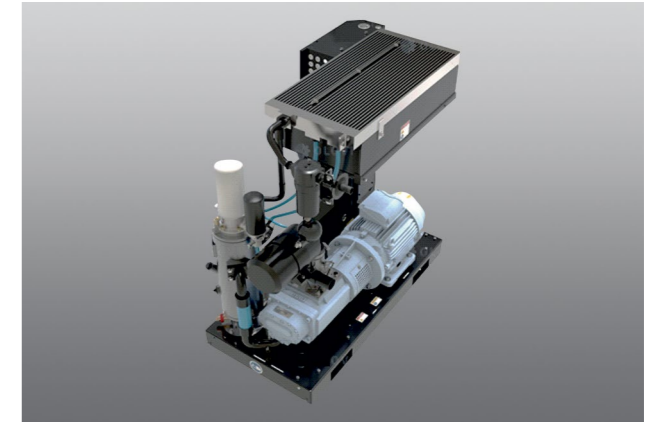
**Advanced Package Design**  
Functional and Aesthetic

The package is configured with subsystems that are designed to minimize system losses and maximize energy savings. While the design offers easy serviceability, the aesthetically built acoustic enclosure keeps the noise levels in check.



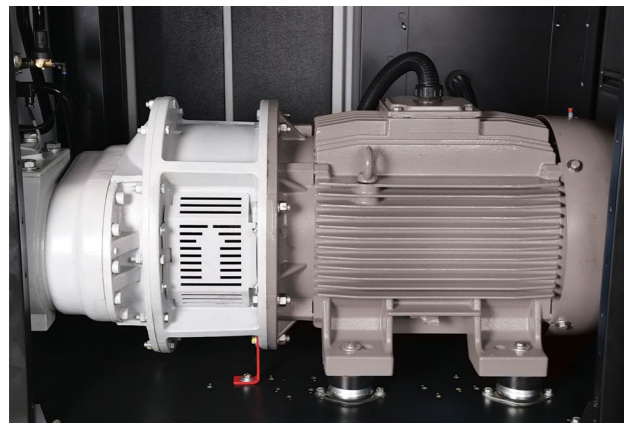
**Low Oil Carry Over (< 1ppm)**  
Superior Quality of Air

ELGi has developed a unique OSBIC process (Oil Separation by Impact and Centrifugal action) to separate air and oil with minimum pressure drop. This process involves removing oil in three stages, delivering consistent low oil carryover. This efficient method also increases the life of the air-oil separation filter.



**Efficient Cooling System**  
Extended Life and Cool Air

The cooling system with optimal fans and a large cooler surface area offers superior cooling performance. The integrated fan motor uses significantly low power and maintains an optimal temperature range of oil, thereby increasing the life of the parts. This smart cooling system keeps the discharged compressed air temperature low easing the load on the downstream equipment.



**Motors**  
Reliable and Efficient

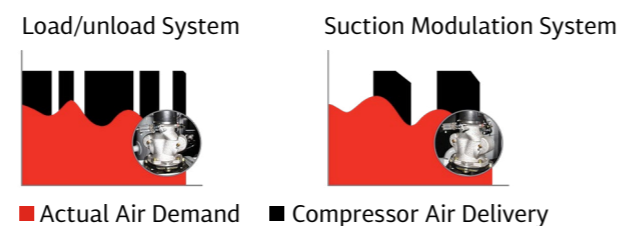
The motors with a larger core and increased windings provide better thermal management. Additional fins on the face of the motor with the lowest air block over the frame provide better reliability. The four pole motors offer better efficiency than other motors.

\*Available in optional IE4 efficiency configuration

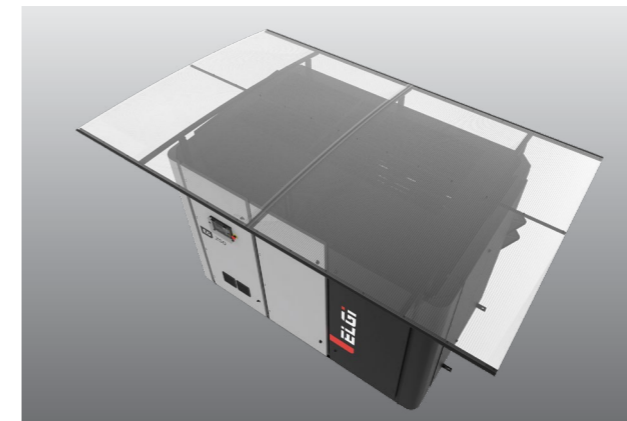


**Intake Valve System**  
Reduced Starting Load

The new generation intake valve with an integrated blow-down unit, solenoid control, and actuator, is designed for high efficiency. Modulation unit\* provides savings of upto 20% of total power consumption at 60% flow.



\*Available for models from 55kW and above



**Reliability Under Extreme Conditions**  
Robust and Reliable

The EG Series compressors are robust and reliable. They are designed to perform at extreme temperatures - from cold to hot and from dry to extremely humid conditions with design temperatures up to 50° c (115 degree F for Americas).

Optional outdoor protection\* and low ambient models are available\*

\*For select regions



**Custom-Designed Moisture Separator**  
Longer Life of End-Use Equipment

The EG Series air compressor has a custom-designed centrifugal type moisture separator with an automatic drain that comes as a part of the package at no extra cost. The custom-designed separator removes over 99% of bulk water from the compressed air, resulting in a corrosion-free, longer life of end-use equipment and reducing the load on the dryer.



**Safety and Protection**

EG Series compressors are designed to ensure the highest level of safety.

**High-pressure trip | High-temperature trip | Pressure relief valve | Low voltage trip | Single phase preventer | Reverse rotation prevention.**



**Best-In-Class Warranty**

Superior warranty of upto 10 years on the airend\* and package warranty of 5 years\* irrespective of operating hours.

\*In select regions; contact your local ELGi representative for further details; T&C Apply.



**Reports**

Provides cumulative report (run hours, load hours, stop hours, fault hours and remaining hours of operation for filters and other maintenance needs such as oil replacement)

- **Detailed Report** - Previous 15 days (Load hours, unload hours, stop hours, fault hours and number of times machine stopped due to standby)
- **Fault Report** - Previous 99 faults in chronological order with real time stamping and type of fault.
- **VFD Parameters** - Displays current, frequency, voltage and percentage of operating load distribution hours.
- **Mimic Display** - Readout and closed-loop control

**Remote Monitoring**

**DCS (MODBUS RTU/RS 485)** - The controller is enabled to synchronise with the distributed control system - control of compressor from the control panel of the customer.

**SCADA** - Compressor control through PC with remote monitoring by supervisory control and data acquisition process.



**Save Energy with optional VFD**

The In-built ELGi Variable Frequency Drives (VFD) matches the compressor output with the demand by varying motor speed which reduces the power consumption and subsequently results in savings.

The VFD helps in eliminating frequent load-unload cycles. In a fixed speed compressor with a Star-Delta starter, the starting current is as high as three times the full load current (FLC). With ELGi VFD, the starting current is less than the FLC.

**Advantages:**

- Energy savings
- Improved power factor
- Low starting current and hence reduced maximum demand
- Reduced maintenance
- High efficiency combined efficiency drive system

**EG Series**

The Technological Edge to Power Your Business



- **Two-Stage Air Filtration**  
Increased Life of Consumables
- **Ease Of Maintenance**  
Ease of Access to Components with Removable Panels
- **Neuron III Controller**  
Advanced, Intelligent Controller for Safety and Reliability
- **Energy-Efficient**  
Eco-Friendly Compressors
- **Robust Cooling System**  
Reduced Air outlet and Oil Temperature

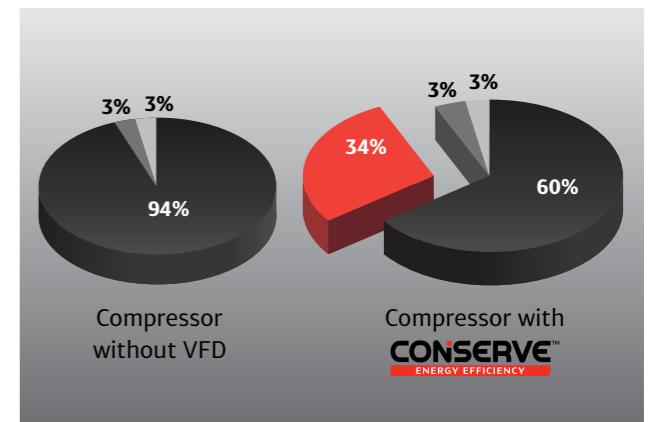
- **Silent And Aesthetic**  
Enclosure Designed to Industrial Standards
- **Excellent Oil Separation OSBIC**  
1 PPM Oil Carry Over
- **Optional Built-in VFD**  
Compact and Saves Floor Area
- **Safety Compliant Package**  
CE Certified
- **Highly Efficient Motor**  
Energy Cost Savings



**Save Energy with Heat Recovery System**

ELGi's Heat Recovery System is an accessory that can be added to the EG Series compressor.

The Heat Recovery System can recover up to 76% of the waste heat generated during the compression process which can then in turn be used to heat water.



Power Saving with VFD System



### Technical Specifications - 50Hz Fixed Speed

Model	Motor Power		Working Pressure		Free Air Delivery		Weight		Noise	Dimensions L x B x H
	50Hz	kW	hp	bar g	psi g	m <sup>3</sup> /min	cfm	lbs		
EG 11	11	15	7.0	102	2.01	71	1301	590	69	1356 x 721 x 1370
			8.0	116	1.81	64				
			9.5	138	1.64	58				
			12.5	181	1.39	49				
EG 15	15	20	7.0	102	2.78	98	1389	630	69	1356 x 721 x 1370
			8.0	116	2.63	93				
			9.5	138	2.27	80				
			12.5	181	1.98	70				
EG 18	18	25	7.0	102	3.40	120	1587	720	69	1500 x 821 x 1370
			8.0	116	3.23	114				
			9.5	138	2.83	100				
EG 22	22	30	7.0	102	4.02	142	1587	720	69	1500 x 821 x 1370
			8.0	116	3.91	138				
			9.5	138	3.34	118				
			12.5	181	2.75	97				
EG 26	26	35	4.5	65	5.15	182	2599	1179	69	1705 x 1111 x 1500
			7.0	102	5.01	177				
			8.0	116	4.47	158				
			9.5	138	4.16	147				
EG 30	30	40	4.5	65	5.95	210	2599	1179	69	1705 x 1111 x 1500
			7.0	102	5.83	206				
			8.0	116	5.18	183				
			9.5	138	4.87	172				
EG 37	37	50	4.5	65	7.28	257	2778	1260	69	1705 x 1111 x 1500
			7.0	102	7.22	255				
			8.0	116	6.65	235				
			9.5	138	5.97	211				
EG 45	45	60	4.5	65	8.86	313	2791	1266	69	1705 x 1111 x 1500
			7.0	102	8.75	309				
			8.0	116	7.99	282				
			9.5	138	7.39	261				
EG 55	55	75	4.5	65	10.90	385	3743	1698	69	1959 x 1266 x 1754
			7.0	102	10.76	380				
			8.0	116	10.11	357				
			9.5	138	9.29	328				
EG 75	75	100	4.5	65	14.98	529	4387	1990	69	2065 x 1355 x 1970
			7.0	102	14.95	528				
			8.0	116	14.02	495				
			9.5	138	12.86	454				
EG 90	90	125	4.5	65	19.9	706	6834	3100	75	2830 x 1640 x 2125
			7.0	102	16.6	585	5952	2700		
			8.0	116	15.2	538				
			10.0	145	13.3	470				
EG 90P	90	125	4.5	65	17.27	610	6570	2980	76	2916 x 1884 x 1925
			7	102	17.05	602				
			8	116	15.66	553				
			9.5	138	13.45	475				
			12.5	181	11.86	419				

### Technical Specifications - 50Hz Fixed Speed

Model	Motor Power		Working Pressure		Free Air Delivery		Weight		Noise	Dimensions L x B x H		
	50Hz	kW	hp	bar g	psi g	m <sup>3</sup> /min	cfm	lbs			(kg)	
EG 110	110	150	4.5	65	24.3	858	7496	3400	75	2830 x 1640 x 2125		
			7.0	102	19.8	706	6834	3100				
			8.0	116	18.4	649						
			10.0	145	16.4	580						
EG 110P	110	150	4.5	65	22.09	780	7055	3200	76	2916 x 1884 x 1925		
			7	102	21.55	761						
			8	116	20.50	724						
			9.5	138	17.50	618						
EG 132	132	175	4.5	65	29.1	1030	8157	3700	75	2830 x 1640 x 2125		
			7.0	102	24.2	855	7496	3400				
			8.0	116	22.4	791						
			10.0	145	20.1	710						
EG 132P	132	175	4.5	65	26.76	945	8752	3970	76	2916 x 1884 x 1925		
			7	102	26.51	936						
			8	116	24.35	860						
			9.5	138	21.52	760						
EG 160	160	200	4.5	65	38.51	1360	8157	3700	75	2830 x 1640 x 2125		
			7.0	102	37.94	1340					9105	4130
			8.0	116	34.48	1218						
			9.5	138	31.15	1100						
EG 160P	160	200	4.5	65	30.81	1088	9105	4130	76	2916 x 1884 x 1925		
			7	102	30.81	1088						
			8	116	28.77	1016						
			9.5	138	25.71	908						
EG 200	200	250	4.5	65	43.60	1540	11673	5295	78	3490 x 2251 x 2441		
			7.0	102	43.18	1525					12467	5655
			8.0	116	41.77	1475						
			9.5	138	37.88	1320						
EG 250	250	300	4.5	65	43.60	1540	12467	5655	78	3490 x 2251 x 2441		
			7.0	102	43.18	1525						
			8.0	116	41.77	1475						
			9.5	138	37.88	1320						
			12.5	181	31.15	1100						

### Technical Specifications - 50Hz Variable Speed

Model	Motor Power		Working Pressure		Free Air Delivery		Weight		Noise	Dimensions L x B x H
	50Hz	kW	hp	bar g	psi g	m <sup>3</sup> /min	cfm	lbs		
EG 11	11	15	7.0	102	0.71 ~ 2.01	25 ~ 71	1411	640	69	1356 x 721 x 1370
			8.0	116	0.71 ~ 1.81	25 ~ 64				
			9.5	138	0.71 ~ 1.64	25 ~ 58				
			12.5	181	0.57 ~ 1.36	20 ~ 48				
EG 15	15	20	7.0	102	1.27 ~ 2.78	45 ~ 98	1565	710	69	1356 x 721 x 1370
			8.0	116	1.19 ~ 2.63	42 ~ 93				
			9.5	138	0.99 ~ 2.27	35 ~ 80				
			12.5	181	0.76 ~ 1.98	27 ~ 70				
EG 18	18	25	7.0	102	1.56 ~ 3.40	55 ~ 120	1653	750	69	1500 x 821 x 1370
			8.0	116	1.50 ~ 3.23	53 ~ 114				
			9.5	138	1.13 ~ 2.83	40 ~ 100				
			12.5	181	1.02 ~ 2.32	36 ~ 82				
EG 22	22	30	7.0	102	1.78 ~ 4.02	63 ~ 142	1642	745	69	1500 x 821 x 1370
			8.0	116	1.78 ~ 3.91	63 ~ 138				
			9.5	138	1.56 ~ 3.34	55 ~ 118				
			12.5	181	1.19 ~ 2.75	42 ~ 97				
EG 26	26	35	4.5	65	1.98 ~ 5.15	70 ~ 182	2698	1224	69	1705 x 1111 x 1500
			7.0	102	1.98 ~ 5.01	70 ~ 177				
			8.0	116	1.64 ~ 4.47	58 ~ 158				
			9.5	138	1.47 ~ 4.16	52 ~ 147				
EG 30	30	40	4.5	65	1.22 ~ 5.95	43 ~ 210	2698	1224	69	1705 x 1111 x 1500
			7.0	102	1.16 ~ 5.83	41 ~ 206				
			8.0	116	1.33 ~ 5.18	47 ~ 183				
			9.5	138	1.53 ~ 4.87	54 ~ 172				
EG 37	37	50	4.5	65	1.50 ~ 7.28	53 ~ 257	2877	1305	69	1705 x 1111 x 1500
			7.0	102	1.56 ~ 7.22	55 ~ 255				
			8.0	116	1.70 ~ 6.65	60 ~ 235				
			9.5	138	1.87 ~ 5.97	66 ~ 211				
EG 45	45	60	4.5	65	1.81 ~ 8.86	64 ~ 313	2890	1311	69	1705 x 1111 x 1500
			7.0	102	1.87 ~ 8.75	66 ~ 309				
			8.0	116	2.07 ~ 7.99	73 ~ 282				
			9.5	138	2.21 ~ 7.39	78 ~ 261				
EG 55	55	75	4.5	65	2.55 ~ 10.90	90 ~ 385	3887	1763	69	1959 x 1266 x 1754
			7.0	102	2.58 ~ 10.76	91 ~ 380				
			8.0	116	2.55 ~ 10.11	90 ~ 357				
			9.5	138	2.55 ~ 9.29	90 ~ 328				
EG 75	75	100	4.5	65	2.3 ~ 14.98	81 ~ 529	4497	2040	69	2065 x 1355 x 1970
			7	102	2.3 ~ 14.95	81 ~ 528				
			8	116	2.13 ~ 14.02	75 ~ 495				
			9.5	138	2.7 ~ 12.86	95 ~ 454				
EG 90	90	125	7.0	102	14.07 ~ 16.7	235 ~ 590	6096	2765	75	2830 x 1640 x 2125
			8.0	116	6.59 ~ 15.2	233 ~ 538				
			10.0	145	6.31 ~ 13.3	223 ~ 470				
EG 90P	90	125	7	102	6.68 ~ 17.05	236 ~ 602	7121	3230	76	2916 x 1884 x 1925
			8	116	6.65 ~ 15.66	235 ~ 553				
			9.5	138	6.46 ~ 13.45	228 ~ 475				
EG 110	110	150	7.0	102	7.87 ~ 19.9	278 ~ 701	6978	3165	75	2830 x 1640 x 2125
			8.0	116	7.75 ~ 18.4	274 ~ 649				
			10.0	145	7.75 ~ 16.4	274 ~ 580				

### Technical Specifications - 50Hz Variable Speed

Model	Motor Power		Working Pressure		Free Air Delivery		Weight		Noise	Dimensions L x B x H
	50Hz	kW	hp	bar g	psi g	m <sup>3</sup> /min	cfm	lbs		
EG 110P	110	150	7	102	8.1 ~ 21.55	286 ~ 761	7496	3400	76	2916 x 1884 x 1925
			8	116	8.04 ~ 20.5	284 ~ 724				
			9.5	138	7.87 ~ 17.5	278 ~ 618				
			12.5	181	7.14 ~ 14.87	252 ~ 525				
EG 132	132	175	7.0	102	10.00 ~ 24.2	353 ~ 855	7639	3465	75	2830 x 1640 x 2125
			8.0	116	9.85 ~ 22.4	348 ~ 791				
			10.0	145	9.65 ~ 20.1	341 ~ 710				
EG 132P	132	175	7	102	10.48 ~ 26.51	370 ~ 936	9458	4290	76	2916 x 1884 x 1925
			8	116	10.34 ~ 24.35	365 ~ 860				
			9.5	138	10.45 ~ 21.52	369 ~ 760				
			12.5	181	7.59 ~ 17.53	268 ~ 619				
EG 160	160	200	7.0	102	11.60 ~ 29.1	411 ~ 1026	8422	3820	75	2830 x 1640 x 2125
			8.0	116	11.75 ~ 26.5	415 ~ 935				
			10.0	145	11.55 ~ 24.05	408 ~ 850				
EG 160P	160	200	7	102	12.71 ~ 30.81	449 ~ 1088	9568	4340	76	2916 x 1884 x 1925
			8	116	12.57 ~ 28.77	444 ~ 1016				
			9.5	138	12.49 ~ 25.71	441 ~ 908				
EG 200	200	250	4.5	65	15.4 ~ 38.51	544 ~ 1360	11949	5420	78	3490 x 2251 x 2441
			7.0	102	14.8 ~ 37.94	525 ~ 1340				
			8.0	116	14.7 ~ 34.48	520 ~ 1218				
			9.5	138	14.4 ~ 31.15	512 ~ 1100				
EG 250	250	300	4.5	65	17.4 ~ 43.6	614 ~ 1540	12743	5780	78	3490 x 2251 x 2441
			7.0	102	18.2 ~ 43.18	642 ~ 1525				
			8.0	116	18.0 ~ 41.77	635 ~ 1475				
			9.5	138	17.7 ~ 37.38	625 ~ 1320				
			12.5	181	15.34 ~ 31.15	542 ~ 1100				

**Note:**

- Free Air Delivery (FAD) is tested as per ISO 1217 : 2009 Annexure 'C' Edition: 4 for Fixed Speed Machines and as per Annexure 'E' Edition: 4 for VFD machines.
- Sound level measured as per ISO 2151, Second Edition.
- All standard models are air-cooled, please reach out to our local sales representative for water cooled options.
- Due to continuous improvements, the specifications are subject to change without prior notice.

### Technical Specifications - 60Hz Fixed Speed

Model	Motor Power		Working Pressure		Free Air Delivery		Weight		Noise	Dimensions L x B x H
	60Hz	kW	hp	bar g	psi g	m <sup>3</sup> /min	cfm	lbs		
EG 11	11	15	6.9	100	2.01	71	1213	550	69	56 x 32 x 58
			8.7	125	1.76	62				
			10.4	150	1.56	55				
			12.1	175	1.39	49				
EG 15	15	20	6.9	100	2.66	94	1257	570	69	56 x 32 x 58
			8.7	125	2.41	85				
			10.4	150	2.18	77				
EG 18	18	25	12.1	175	1.84	65	1411	640	69	56 x 32 x 58
			6.9	100	3.31	117				
			8.7	125	3.11	110				
EG 22	22	30	10.4	150	2.61	92	1433	650	69	56 x 32 x 58
			12.1	175	2.32	82				
			6.9	100	4.05	143				
			8.7	125	3.79	134				
			10.4	150	3.28	116				
			12.1	175	2.72	96				

### Technical Specifications - 60Hz Fixed Speed

Model	Motor Power		Working Pressure		Free Air Delivery		Weight		Noise	Dimensions L x B x H
	60Hz	kW	hp	bar g	psi g	m <sup>3</sup> /min	cfm	lbs		
EG 30	30	40	6.9	100	5.75	203	2401	1089	69	67 x 44 x 62
			8	115	5.18	183				
			8.7	125	5.04	178				
			10.4	150	4.33	153				
			12.1	175	3.85	136				
EG 37	37	50	6.9	100	7.02	248	2447	1110	69	67 x 44 x 62
			8	115	6.51	230				
			8.7	125	6.00	212				
			10.4	150	5.75	203				
			12.1	175	4.87	172				
EG 45	45	60	6.9	100	8.55	302	2453	1113	69	67 x 44 x 62
			8	115	7.82	276				
			8.7	125	7.56	267				
			10.4	150	6.51	230				
			12.1	175	5.89	208				
EG 55	55	75	6.9	100	10.62	375	3503	1588	69	77.1 x 49.7 x 69
			8	115	10.05	355				
			8.7	125	9.71	343				
			10.4	150	8.16	288				
			12.1	175	7.67	271				
EG 75	75	100	6.9	100	14.87	525	4674	2120	69	81.3 x 53.4 x 77.6
			8	115	13.73	485				
			8.7	125	12.97	458				
			10.4	150	12.03	425				
			12.1	175	11.04	390				
EG 90	90	125	6.9	100	17.10	604	6197	2811	75	111 x 65 x 84
			8	115	15.57	550				
			8.7	125	15.18	536				
			10.4	150	13.54	478				
EG 90P	90	120	6.9	100	17.42	615	6197	2811	75	114.8 x 74.2 x 75.8
			7.9	115	15.60	551				
			8.6	125	15.57	550				
			10.3	150	13.39	473				
EG 110	110	150	6.9	100	20.39	720	6393	2900	75	111 x 65 x 84
			8	115	18.41	650				
			8.7	125	17.84	630				
			10.4	150	16.14	570				
EG 110P	110	150	6.9	100	21.55	761	6824	3095	76	114.8 x 74.2 x 75.8
			7.9	115	21.38	755				
			8.6	125	19.26	680				
			10.3	150	16.85	595				
EG 132P**	132	175	6.9	100	26.17	924	8936	4053	76	114.8 x 74.2 x 75.8
			8.6	125	23.05	814				
			10.3	150	20.84	736				
			12.1	175	17.90	632				
EG 160	160	200	6.9	100	27.61	975	7840	3556	75	111 x 65 x 84
			8	115	25.12	887				
			8.7	125	24.07	850				
			10.4	150	22.03	778				

### Technical Specifications - 60Hz Fixed Speed

Model	Motor Power		Working Pressure		Free Air Delivery		Weight		Noise	Dimensions L x B x H
	60Hz	kW	hp	bar g	psi g	m <sup>3</sup> /min	cfm	lbs		
EG 160P	160	200	6.9	100	29.76	1051	8936	4053	76	114.8 x 74.2 x 75.8
			7.9	115	28.03	990				
			8.6	125	26.05	920				
			10.3	150	24.3	858				
			12.1	175	20.39	720				
EG200	200	250	6.9	100	36.10	1275	12586	5709	78	126 x 83 x 88
			8	115	33.47	1182				
			8.7	125	33.27	1175				
			10.4	150	28.32	1000				
EG 250	250	300	6.9	100	42.90	1515	12632	5730	78	126 x 83 x 88
			8	115	38.37	1355				
			8.7	125	38.23	1350				
			10.4	150	33.13	1170				

### Technical Specifications - 60Hz Variable Speed

Model	Motor Power		Working Pressure		Free Air Delivery		Weight		Noise	Dimensions L x B x H
	60Hz	kW	hp	bar g	psi g	m <sup>3</sup> /min	cfm	lbs		
EG 11	11	15	6.9	100	0.68-2.01	24-71	1213	550	69	56 x 32 x 58
			8.7	125	0.66-1.76	23-62				
			10.4	150	0.63-1.56	22-55				
			12.1	175	0.51-1.39	18-49				
EG 15	15	20	6.9	100	1-2.66	35-94	1257	570	69	56 x 32 x 58
			8.7	125	0.97-2.41	34-85				
			10.4	150	0.97-2.18	34-77				
			12.1	175	0.83-1.84	29-65				
EG 18	18	25	6.9	100	1.42-3.31	50-117	1411	640	69	56 x 32 x 58
			8.7	125	1.28-3.11	45-110				
			10.4	150	1.19-2.61	42-92				
			12.1	175	1.05-2.32	37-82				
EG 22	22	30	6.9	100	1.85-4.05	65-143	1433	650	69	56 x 32 x 58
			8.7	125	1.59-3.79	56-134				
			10.4	150	1.34-3.26	47-115				
			12.1	175	1.36-2.72	48-96				
EG 30	30	40	6.9	100	1.19-5.69	42-201	2401	1089	69	67 x 44 x 62
			8	115	1.25-5.15	44-182				
			8.7	125	1.28-5.04	45-178				
			10.4	150	1.31-4.33	46-153				
EG 37	37	50	6.9	100	1.56-7.02	55-248	2447	1110	69	67 x 44 x 62
			8	115	1.65-6.51	58-230				
			8.7	125	1.53-6	54-212				
			10.4	150	1.65-5.75	58-203				
EG 45	45	60	6.9	100	1.7-8.55	60-302	2453	1113	69	67 x 44 x 62
			8	115	1.87-7.82	66-276				
			8.7	125	1.85-7.56	65-267				
			10.4	150	1.82-6.51	64-230				
EG 55	55	75	6.9	100	2.36-5.89	83-208	3503	1588	69	77.1 x 49.7 x 69
			8	115	2.25-5.41	78-190				
			8.7	125	2.21-5.21	77-187				
			10.4	150	1.91-4.51	68-163				

### Technical Specifications - 60Hz Variable Speed

Model	Motor Power		Working Pressure		Free Air Delivery		Weight		Noise	Dimensions L x B x H
	60Hz	kW	hp	bar g	psi g	m <sup>3</sup> /min	cfm	lbs		
EG 55	55	75	6.9	100	2.19-10.62	77-375	3503	1588	69	77.1 x 49.7 x 69
			8	115	2.19-10.62	77-375				
			8.7	125	2.16-9.71	76-343				
			10.4	150	2.24-8.16	79-288				
EG 75	75	100	6.9	100	2.47-14.87	87-525	4829	2190	69	81.3 x 53.4 x 77.6
			8	115	2.44-13.73	86-485				
			8.7	125	2.44-12.97	86-458				
			10.4	150	2.7-12.03	95-425				
EG 90	90	125	6.9	100	6.66-17.1	235-604	6197	2811	75	111 x 65 x 84
			8	115	6.69-15.46	236-546				
			8.7	125	6.55-15.18	231-536				
			10.4	150	6.35-13.54	224-478				
EG 90P	90	120	6.9	100	6.94-17.33	245-612	6197	2811	75	114.8 x 74.2 x 75.8
			7.9	115	6.6-15.6	233-551				
			8.6	125	6.18-15.57	218-550				
			10.3	150	6.12-13.39	216-473				
EG 110	110	150	6.9	100	7.85-20.39	277-720	6393	2900	75	111 x 65 x 84
			8	115	7.93-18.41	280-650				
			8.7	125	7.76-17.84	274-630				
			10.4	150	7.42-16.14	262-570				
EG 110P	110	150	6.9	100	7.88-21.55	278-761	6824	3095	76	114.8 x 74.2 x 75.8
			7.9	115	8.44-21.38	298-755				
			8.6	125	7.65-19.26	270-680				
			10.3	150	7.82-16.85	276-595				
EG 132P**	132	175	6.9	100	8.84-26.17	312-924	8936	4053	76	114.8 x 74.2 x 75.8
			8.6	125	7.28-23.05	257-814				
			10.3	150	6.94-20.84	245-736				
			12.1	175	5.92-17.9	209-632				
EG 160	160	200	6.9	100	10.91-27.61	385-975	7840	3556	75	111 x 65 x 84
			8	115	10.79-25.12	381-887				
			8.7	125	10.85-24.07	383-850				
			10.4	150	10.68-22.03	377-778				
EG 160P	160	200	6.9	100	11.59-29.76	409-1051	8936	4053	76	114.8 x 74.2 x 75.8
			7.9	115	11.67-28.03	412-990				
			8.6	125	2.89-26.05	102-920				
			10.3	150	10.57-24.3	373-858				
EG 200	200	250	6.9	100	14.19-36.1	501-1275	12586	5709	78	126 x 83 x 88
			8	115	13.97-33.47	493-1182				
			8.7	125	14.33-33.27	506-1175				
			10.4	150	13.74-28.32	485-1000				
EG 250	250	300	6.9	100	17.39-42.9	614-1515	12632	5730	78	126 x 83 x 88
			8	115	15.98-38.37	564-1355				
			8.7	125	16.12-38.23	569-1350				
			10.4	150	15.86-33.13	560-1170				

- Note:**
- Free Air Delivery (FAD) is tested as per ISO 1217 : 2009 Annexure 'C' Edition: 4 for Fixed Speed Machines and as per Annexure 'E' Edition: 4 for VFD machines.
  - Sound level measured as per ISO 2151, Second Edition.
  - All standard models are air-cooled, please reach out to our local sales representative for water cooled options.
  - Due to continuous improvements, the specifications are subject to change without prior notice.
  - \*\* Product not available in Americas

Always Better.

Elgi Equipments Limited is a global air compressor manufacturer with a broad line of innovative and technologically superior compressed air systems.

air solutions from oil lubricated and oil free rotary screw compressors, oil lubricated and oil free reciprocating compressors and centrifugal compressors, to dryers, filters, and downstream accessories.

ELGi has consistently worked towards ensuring that its customers achieve their productivity goals while keeping the cost of ownership low. ELGi offers a complete range of compressed

The company's portfolio of over 400 products has found wide application across industries.

60+

Years of Customer-Centric Innovation

2 Mn+

Installations Worldwide

120+

Countries and Counting

**DEMING PRIZE 2019**

ELGi is the first globally established industrial air compressor manufacturer to be awarded the Deming Prize for Excellence in Total Quality Management.



**ELGi**<sup>®</sup>  
Always Better.

